

Children in a Multicultural Context

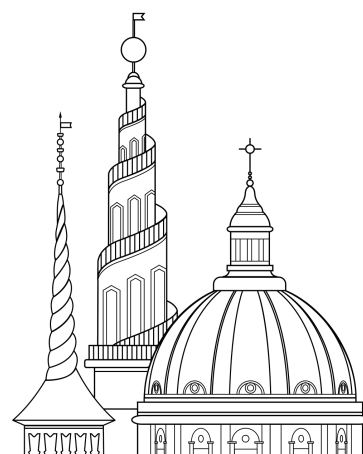


London

Program study tour

Spring 2019

Name: _____



Study Tour Objectives

Study Tour Objectives:

Engage in your personal learning process outside the classroom by actively participating and challenging your current ideas and assumptions

Get to know your fellow students and professors in an educational and social setting outside DIS

Gain a deeper and more nuanced understanding of how classroom theories apply to the real world environment

Learn about schooling and education in the U.K. through a visit to the King's School and to the Hermitage School

Experience multicultural London by visiting the Brixton Market and learn about the history of Brixton area through a guided walking tour by Black History Walks

Gain insight into primary education in the UK at Seebright Elementary School OR experience play and learning at Effra Early Years Education Center

Experience quintessential British Tea Tradition by visiting Fortnum and Mason

Experience material culture at some key child related museums from a child's view

Reflect and discuss your observations and experiences with faculty at a reflection session

Experience some of the British and World's most unique cultural and historical sites

Study Tour Leaders: **Maja Kerstin Sbahi Biehl**
Lecturer & Praktikum Konsulent
Phone: +45 5197 6257
Shannon Kay Schooley
Program Assistant
Phone: +45 2446 9272

DIS: +45 33 11 01 44 (8:30-16:30)
+45 30 67 10 00 (24hrs)

Embassy: US Embassy London
33 Nine Elms Ln, London SW11 7US, UK

Health information:

If you officially disclosed an allergy and/or dietary restriction and/or have been granted reasonable accommodations on study tour based on a documented disability, this information has been shared with your tour leaders. However, it remains your responsibility to seek necessary medical care in advance of your study tour and manage your health while on tour.

If you would like your leader to know more about your medical or disability history, it is up to you to disclose it to them. In addition, if you need reasonable assistance in managing a health condition while on tour (e.g. if you have seizures and want leaders to know how to act if one occurs on tour or have an epi pen you would like someone to locate for you should you have an allergic reaction, or similar), it is up to you to request such assistance directly from your fellow students/leaders. If you have questions or would like assistance in this process, please contact the Care Team at care@dis.dk

SUNDAY MARCH 24, 2019

9:20



Check-in at airport

Please meet the group outside of 7/11 in Terminal 2 at the Copenhagen Airport.

Check-in for flight D82903 using your passport and PNR code MVDJ4W.

Continue through security and passport control. Please meet the group at the gate no later than 30 minutes before the flight departs. Make sure to pack a lunch or buy one in the airport. There will be no time for lunch when you arrive in London.

11:20



Depart for London on flight D82903

12:15



Arrive at London Gatwick Airport



Depart for hotel

15:30



Arrive and check-in

The Tower Hotel

St Katharine's Way, St Katharine's & Wapping
E1W 1LD London
GB

Phone: +44 800 330 8005

15:45



Meet in hotel lobby ready to depart



Walk to Tower of London

16:00 - 17:30



Group Visit

Tower of London

St Katharine's & Wapping
EC3N 4AB London
GB

Phone: +44 844 482 7777

17:30



Walk to group dinner

17:45



Group Dinner

Ping Pong

Unit 3, Quayside, St Katharine's and Wapping

E1W 1 BA London

GB

Phone: +44 20 7680 7850



Rest of the evening on own

MONDAY MARCH 25, 2019



Breakfast at the hotel

Breakfast is served from 6:30-10:00. Please eat at your own leisure before the listed meeting time.

9:00



Meet in the hotel lobby ready to depart



Depart for group visit

Walk to Tower Hill Station

Take the District Line toward Ealing Broadway

Transfer at Victoria Station

Take the Victoria Line toward Brixton

END: Brixton Station

10:00 - 12:00



Group Visit

Black History Walks

We will have a guided tour of Brixton focusing on children, youth, schools and families in the area.

12:00 - 13:30



Lunch on Own at Brixton Market

You will be given cash to cover the cost of your lunch.



Depart for afternoon cultural visits

Walk to Brixton Station

Take the Victoria Line toward Walthamstow Central

Transfer at Green Park Station

Take the Jubilee Line toward Stratford

END: Waterloo Underground Station

14:45



Group Activity London Eye

London Eye

SE1 7PB London

GB

15:30



Rest of the evening, including dinner, on own

TUESDAY MARCH 26, 2019



You will be given a breakfast pack today

7:00



Meet in hotel lobby ready to depart

7:10



Depart for group visit

Walk to Tower Hill Station

Take the District Line toward Richmond

END: Richmond Station

Walk to King's House School

8:45 - 11:00



Group Visit

King's House School

61 King's Road Richmond | TW10 6EG

TW10 6EG Richmond

GB

Phone: +44 (208) 940-1878

11:00



Depart for group visit

Walk to Richmond Station

Take the District Line toward Upminster

End: Mile End Station

Walk to visit

You will be given a lunch pack to eat on the way to the visit.

13:00 - 15:00



Group Visit

9 Bede Square

London E3 4GY

Phone: +44 20 7364 7557

Mile End Children's Centre

9 Bede Square Joseph Street

London E3 4GY

+4420 7364 7557



Rest of the afternoon and evening on own

WEDNESDAY MARCH 27, 2019



Breakfast at the hotel

Breakfast is served from 6:30-10:00. Please eat at your own leisure before the listed meeting time.



Meet in hotel lobby ready to depart

Group A: Meet Shannon at 8:00 in the hotel lobby.

Group B: Meet Maja at 8:30 in the hotel lobby.



Depart on public transportation for group visit

Your tour leaders will direct you to your respective visit.

9:00 - 13:00



Depart for academic visit Seebright Primary School

Sebright School
Audrey Street
Goldsmiths Row
E2 8QH

GB

Phone: +44 (207) 739-6531

Group A: Seebright Primary School (10 students)

9:30 - 11:45



Group Visit Effra Early Years Centre

35 Effra Parade
SW2 1PL London
GB

Phone: +44 (207) 733-8425

Group B: Effra Early Years Centre (10 students)



Time on own

After your academic visit this morning, you will have some time on own to explore London and have lunch. Please meet at Fortnum and Mason at 17:00 for afternoon tea.

17:00



Afternoon Tea Fortnum & Mason

181 Piccadilly
W1A 1ER London
GB

Phone: +44 (207) 734-8040



Rest of the evening on own

THURSDAY MARCH 28, 2019



Breakfast at the hotel

Breakfast is served from 6:30-10:00. Please eat at your own leisure before the listed meeting time.



Morning on own

12:00



Group Cultural Visits

Please visit the cultural site assigned to you today before meeting the group at 17:30 for dinner. Your tour leaders will provide you with some more information on this activity.

17:30



Concluding Group Dinner Kazan Restaurant

93-94 Wilton Rd, Pimlico
SW1V 1DW London
GB

Phone: +44 20 7233 7100

18:50



Walk to theatre

19:30



Theatre

Wicked
Apollo Victoria Theatre
17 Wilton Road
Pimlico
London SW1V 1LG, UK
Tel. +44 844 871 3001



Rest of the evening on own

FRIDAY MARCH 29, 2019



Breakfast at the hotel

Breakfast is served from 6:00-10:00. Please eat at your own leisure before the listed meeting time.

8:30



Meet in hotel lobby ready to check out, store luggage, and depart



Depart for group visit

9:00 - 11:00



Group Visit

Vaughan Way, St Katharine's & Wapping
London E1W 2PT

Phone: +44 20 7702 1037

London Hermitage school visit

12:00



Meet at group lunch

You have some time on own after the visit ends before the concluding group lunch.

12:00



Group Lunch

The Dickens Inn

Marble Quay, St Katharine's Way, St Katharine's & Wapping
E1W 1UH London
GB

Phone: +44 20 7488 2208

13:00



Walk to hotel

13:15



Meet at the hotel, collect luggage, and meet bus

13:30



Depart for London Gatwick Airport

15:45



Check-in at airport

Check-in for flight D82910 using your passport and the PNR code below.

PNR: MVDJ4W

17:45



Depart on flight D82910 for Copenhagen Airport

20:35



Arrive at Copenhagen Airport

In order to constantly improve and enhance our Study Tours, please take a moment to fill out the Study Tour evaluation. You will be sent a link.

Children in a Multicultural Context

24-03-2019 - 29-03-2019

Total on tour: 22

Total students: 20

Total other: 2



Biehl, Maja Kerstin Sbahi



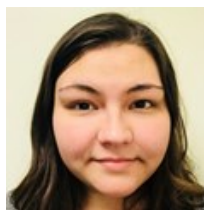
Schooley, Shannon Kay



Arora, Simran

IN

Claremont McKenna College



Bartell, Robin Evan

USA

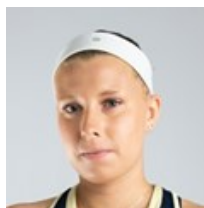
Grinnell College



Bolnick, Brooke Lauren

USA

Washington University in St. Louis



Cass, Callyn Elizabeth

USA

Trinity College



Correa, Gabby Sylvia

USA

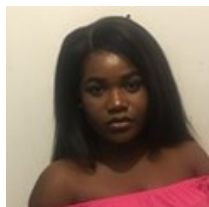
California State University, Northridge



Critelli, Eve Mattaboni

USA

Syracuse University



Dada, Elizabeth Oluwapelumi

USA

Dickinson College



DuShane, Erick William

USA

University of Rochester



Hu, Xiaoting

CN

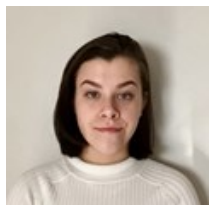
Vassar College



Hutchins, Natalie Ann

USA

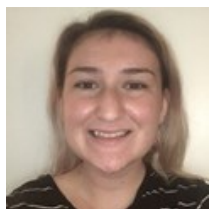
Franklin and Marshall College



Keefe, Nadine Russ
USA
University of Minnesota, Twin Cities



Matos, Dineydi
USA
Dickinson College



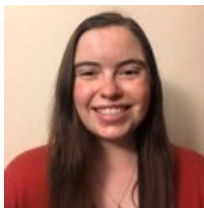
Middleton, Morgan Elizabeth Marie
USA
California State University System



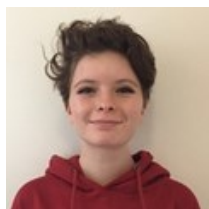
Moore, Anna Rose
USA
University of Vermont



Ocampo, Vane
USA
Denison University



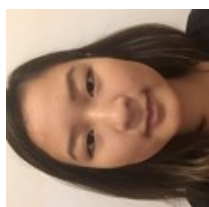
Price, Erin Elisabeth
USA
Smith College



Sharmat, Sophia Halcyon
USA
Sarah Lawrence College



Simmons, Journey Amore
USA
Pomona College



Wang, Elizabeth Bi-Xia
USA
Colgate University



Wardlaw, Madison Lynn
USA
Grinnell College

DIS STUDY TOUR CODE OF CONDUCT

On a DIS study tour it is required that you:

- Are a positive representative of DIS and your home institution
- Are on time and participate actively at all lectures and visits
- Show respect for tour leaders, presenters, local support staff and faculty, and fellow students
- Respect local laws and policies of hostels, hotels, bus companies, airlines, restaurants, and other venues.

DIS STUDY TOUR POLICY

- DIS study tour policies correspond to the DIS policies outlined in the student handbook. DIS policies regarding drugs and alcohol are no different on study tour. Consumption of alcohol during or in-between study tour visits is not permitted.
- DIS tour leaders are obligated to report any inappropriate behavior or negative participation to the DIS disciplinary committee. Inappropriate behavior on study tours can also result in dismissal without refund of tuition or study tour costs.
- Students are responsible for their own actions. Incidents involving property damage and/or breach of local laws/policies are to be resolved by the student.

EMERGENCY PROCEDURES

In case of emergency:

First Priority: Protection of Life

In case of an emergency your first priority is to ensure that you and your fellow students evacuate to a safe area and that you assist others in getting to a safe area to the best of your ability.

Second Priority: Call for assistance

After calling 112 or the local emergency number call one of your tour leaders (emergency numbers are found on the front page of this booklet).

If you cannot reach your tour leaders call the DIS emergency phone:

+45 30 67 10 00

Only after reaching safety, calling for assistance, and reaching a DIS staff member should you call others. DIS will contact your family if necessary.

Third Priority: Assist the injured and/or attempt to eliminate further hazard

If you can be of aid to injured people do so only after making sure that contact has been made with local emergency officials.

If you are able to take steps to eliminate a hazard from spreading or be of aid to local security or law enforcement without putting your own safety at risk you should do so if it can prevent further injury or loss of life.

You should NOT put yourself at any risk to save material assets.

Fourth Priority: Account for all your fellow students

Make sure all your fellow students are accounted for. Assist tour leaders or assign someone to search areas or make calls.

Fifth Priority: Inform your family about your current situation

Make sure your family or a contact back home is aware of the current situation and your condition.

INSURANCE MATTERS WHILE TRAVELLING ON DIS STUDY TOURS

Students enrolled at DIS have comprehensive health -, accident -, property - and personal liability insurance coverage. For further information and details, please refer to the insurance conditions at disabroad.org/insurance.

For insurance claim forms and advice, please see the Housing and Student Services office. They are located in Vestergade 8.

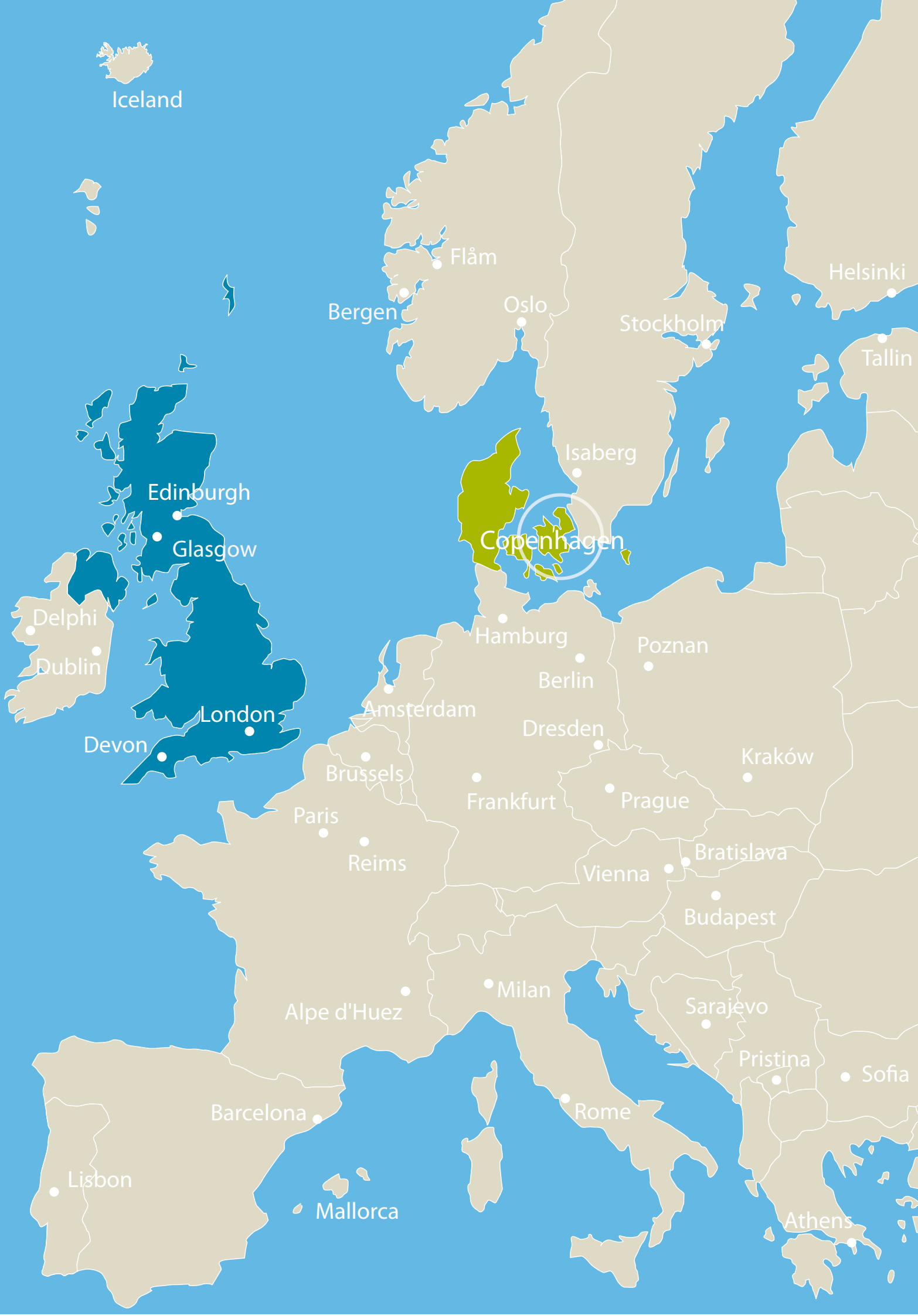
THEFT

Please remember to always keep your personal belongings in a safe place – never leave them unattended or in unlocked premises. Should you, despite having taken these measures, have your personal belongings stolen during your study tour, please make sure to follow the guidelines below in order to be able to make an insurance claim upon your return to DIS.

1. **ALWAYS** file a police report with the local police. Please consult with your study tour leader. Without a police report, the insurance company cannot accept your claim.
2. If either your credit card or cell phone is stolen, don't forget to cancel them to avoid abuse.
3. **ALWAYS** keep a copy of your passport and the Danish residence permit on you. Should your passport get stolen, please consult with your study tour leader who will be able to direct you to the embassy or consulate to get you an emergency passport issued.

MEDICAL EMERGENCIES

Please remember to **ALWAYS** keep your Danish National Health Card (the CPR card) on you. If you need to see a doctor or the emergency room, please consult with your study tour leader who will assist you to the nearest one. Present the doctor/hospital with your CPR card as your personal ID. In some countries, you might still be asked to pay upfront, however please remember to bring all medical receipts, prescriptions and doctor's statements back to DIS. This paperwork will be necessary to get your expenses covered through the insurance.



Iceland

Flåm

Bergen

Oslo

Stockholm

Helsinki

Tallin

Edinburgh

Glasgow

Delphi

Dublin

London

Devon

Isaberg

Copenhagen

Hamburg

Berlin

Poznan

Amsterdam

Dresden

Kraków

Brussels

Paris

Reims

Frankfurt

Prague

Vienna

Bratislava

Budapest

Milan

Alpe d'Huez

Sarajevo

Pristina

Sofia

Barcelona

Rome

Lisbon

Mallorca

Athens