

## Children in a Multicultural Context

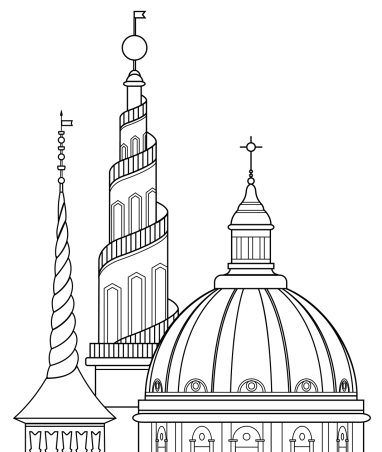


**Esbjerg, Aarhus**

**Program study tour**

Spring 2019

Name: \_\_\_\_\_





## **Study Tour Objectives**

Interact and be in dialogue with 10th graders and the youth school at Basen.

Gain a deeper and more nuanced understanding of how classroom theories apply to the real world environment.

Learn more about your colleagues and yourselves through a dynamic team-building workshop at Markfræs with SPS consultant Niels Dammeyer and about the Danish crime prevention initiatives for youth.

Engage in your personal learning process outside the classroom by actively participating and challenging your current ideas and assumptions.

Engage in dialogue with students at the Grønnevangskolen and at Urban Skolen.

See how nature and childhood intertwine at Bilingland Forest Kindergarten.

Interact and socialize with your colleagues through team building and activities.

Hypothesize connections between your experiences at your Practicum Site, and the experiences you have had earlier in the week at the Reflective Dialogue Workshop with your faculty.

Develop a deeper insight into Denmark through exposure to the culture, history, and socioeconomic aspects of the region.



**Study Tour Leaders:** **Shannon Kay Schooley**  
Program Assistant  
Phone: +45 3010 9284  
**Maja Kerstin Sbahi Biehl**  
Lecturer & Praktikum Konsulent  
Phone: +45 5197 6257

**DIS:** +45 33 11 01 44 (8:30-16:30)  
+45 30 67 10 00 (24hrs)

**Embassy:**

**Health information:**

*If you officially disclosed an allergy and/or dietary restriction and/or have been granted reasonable accommodations on study tour based on a documented disability, this information has been shared with your tour leaders. However, it remains your responsibility to seek necessary medical care in advance of your study tour and manage your health while on tour.*

*If you would like your leader to know more about your medical or disability history, it is up to you to disclose it to them. In addition, if you need reasonable assistance in managing a health condition while on tour (e.g. if you have seizures and want leaders to know how to act if one occurs on tour or have an epi pen you would like someone to locate for you should you have an allergic reaction, or similar), it is up to you to request such assistance directly from your fellow students/leaders. If you have questions or would like assistance in this process, please contact the Care Team at [care@dis.dk](mailto:care@dis.dk)*

## MONDAY FEBRUARY 4, 2019

6:30



Meet the group at Frue Plads

6:45



Depart by bus to Vejen

10:00 - 17:00



### ACADEMIC VISIT

**V10: Basen**

Askovvej 7

6600 Vejen

Phone: +45 2427 4742

*Academic Visits all day:*

*10:00 - 12:00 Grønnevang skolen at: Jacob Gades Alle 16, 6600 Vejen*

*12:00 Lunch packs at Basen*

*13:00 - 15:00 meet with SPS consultant Niels*

*Students will have an opportunity to interact with the youth at the V10 in the classrooms, there will be a tour of a nearby Forest Kindergarten and Team Building Activities with the Crime Prevention Consultant that works for V10.*

12:00 - 13:00



**V10: Basen**

Askovvej 7

6600 Vejen

Phone: +45 2427 4742

17:00



Depart for group dinner

17:45



**Group Dinner**

**Flammen Esbjerg**

BROEN Shopping

Exnersgade 20

6700 Esbjerg

Phone: +45 3526 6376

19:15



Depart for hostel

19:30



**Arrive and Check-In**  
**Danhostel Esbjerg**  
Gl. Vardevej 80  
6700 Esbjerg

Phone: +45 7512 4258



**Rest of the evening on own**

---

## TUESDAY FEBRUARY 5, 2019

8:00



### Breakfast at the hostel

*Please eat breakfast before the listed meeting time.*

8:40



### Meet in hostel lobby ready to check out and store luggage

8:50



### Walk to group visit

9:00 - 13:30



### ACADEMIC VISIT

#### Rybners Gymnasium

Spangsbjerg Møllevej 72

6700 Esbjerg

Phone: +45 7913 4511

*Group visit to local school in Esbjerg*

13:40



### Explore Esbjerg Harbor

*Near Esbjerg Harbour you can also explore the Esbjerg Water tower:  
<https://www.sydvestjyskemuseer.dk/da/besoeg-museerne/esbjerg-vandtaarn/> or*

*The Esbjerg Art Museum: <http://www.eskum.dk/Default.aspx?ID=356>*

*The book print museum: <http://bogtrykmuseet.dk/english/index.html>*

*Find Christian the IX Riding statute or the Byparkens Legaplads (playground) and have a walk down the harbour promenade.*

14:30



### Depart for Aarhus

16:45



### Arrive and check-in

#### CABINN Hotel Aarhus

Kannikegade 14  
8000 Århus C

Phone: +45 8675 7000





Time on own to explore Aarhus

---

18:45



Meet in hotel lobby ready to depart for group dinner



Walk to group dinner

---

19:00



**Group Dinner**

**Grappa**

Åboulevarden 60□

8000 Århus C










Phone: +45 8612 3343



Rest of the evening on own

---

## WEDNESDAY FEBRUARY 6, 2019

- |               |   |  |
|---------------|---|--|
| 8:30          |    | <b>Breakfast at the hostel</b><br><i>Please eat breakfast before the listed meeting time.</i>  |
| 9:30          |    | <b>Meet in the hostel lobby ready to check out and store luggage</b>   |
| 9:45          |    | <b>Depart for ARoS</b>   |
| 10:00 - 11:45 |    | <b>Group Visit<br/>ARoS Art Museum</b><br>Aros Allé 2<br>8000 Århus C<br><br>Phone: +45 8730 6600  |
| 11:45         |  | <b>Meet outside ARoS ready to depart</b>   |
|               |  | <b>Walk to group lunch</b>   |
| 12:00         |  | <b>Lunch at Aarhus Street Food</b><br>Ny Banegårdsgade 46<br>8000 Aarhus<br><br><i>You will be given 100 DKK to cover some of the cost of lunch.</i> |
| 13:00         |  | <b>Depart for Ice Skating</b>  |
| 13:30 - 15:00 |  | <b>Ice Skating</b><br>Musikhuset Aarhus<br>Thomas Jensens Alle 2<br>8000 Aarhus  |

15:00



**Depart for Cabinn Aarhus**

*Pick up luggage, load it on the bus, and depart for Copenhagen.*



**Depart for Copenhagen**

---

19:00



**Approximate arrival in Copenhagen**

---

**THURSDAY FEBRUARY 7, 2019**

**8:00 - 17:00**



**Practicum Day**

---

**FRIDAY FEBRUARY 8, 2019**

**14:00 - 17:00**



**Reflective Workshop**

Pilegårdens Kulturhus  
Brønshøjvej 17  
2700 Brønshøj

*Reflective Workshop with your faculty*

---

# Children in a Multicultural Context

04-02-2019 - 06-02-2019

Total on tour: 22

Total students: 20

Total other: 2



Schooley, Shannon Kay



Biehl, Maja Kerstin Sbahi



Arora, Simran

IN

Claremont McKenna College



Bartell, Robin Evan

USA

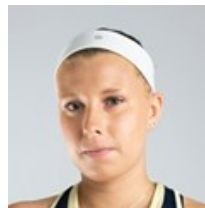
Grinnell College



Bolnick, Brooke Lauren

USA

Washington University in St. Louis



Cass, Callyn Elizabeth

USA

Trinity College



Correa, Gabby Sylvia

USA

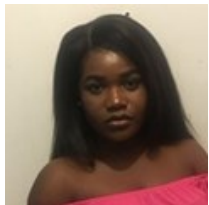
California State University, Northridge



Critelli, Eve Mattaboni

USA

Syracuse University



Dada, Elizabeth Oluwapelumi

USA

Dickinson College



DuShane, Erick William

USA

University of Rochester



Hu, Xiaoting

CN

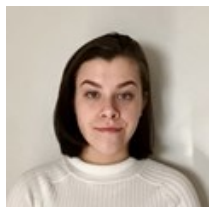
Vassar College



Hutchins, Natalie Ann

USA

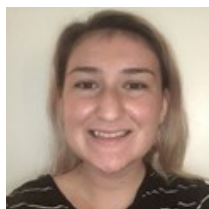
Franklin and Marshall College



Keefe, Nadine Russ  
USA  
University of Minnesota, Twin Cities



Matos, Dineydi  
USA  
Dickinson College



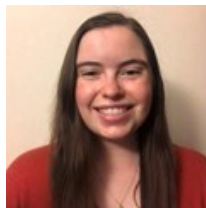
Middleton, Morgan Elizabeth Marie  
USA  
California State University System



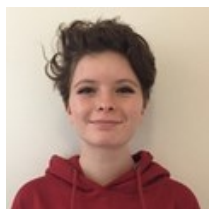
Moore, Anna Rose  
USA  
University of Vermont



Ocampo, Vane  
USA  
Denison University



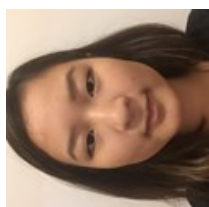
Price, Erin Elisabeth  
USA  
Smith College



Sharmat, Sophia Halcyon  
USA  
Sarah Lawrence College



Simmons, Journey Amore  
USA  
Pomona College



Wang, Elizabeth Bi-Xia  
USA  
Colgate University



Wardlaw, Madison Lynn  
USA  
Grinnell College

## **DIS STUDY TOUR CODE OF CONDUCT**

On a DIS study tour it is required that you:

- Are a positive representative of DIS and your home institution
- Are on time and participate actively at all lectures and visits
- Show respect for tour leaders, presenters, local support staff and faculty, and fellow students
- Respect local laws and policies of hostels, hotels, bus companies, airlines, restaurants, and other venues.

## **DIS STUDY TOUR POLICY**

- DIS study tour policies correspond to the DIS policies outlined in the student handbook. DIS policies regarding drugs and alcohol are no different on study tour. Consumption of alcohol during or in-between study tour visits is not permitted.
- DIS tour leaders are obligated to report any inappropriate behavior or negative participation to the DIS disciplinary committee. Inappropriate behavior on study tours can also result in dismissal without refund of tuition or study tour costs.
- Students are responsible for their own actions. Incidents involving property damage and/or breach of local laws/policies are to be resolved by the student.



## EMERGENCY PROCEDURES

In case of emergency:

### **First Priority: Protection of Life**

In case of an emergency your first priority is to ensure that you and your fellow students evacuate to a safe area and that you assist others in getting to a safe area to the best of your ability.

### **Second Priority: Call for assistance**

After calling 112 or the local emergency number call one of your tour leaders (emergency numbers are found on the front page of this booklet).

If you cannot reach your tour leaders call the DIS emergency phone:

**+45 30 67 10 00**

Only after reaching safety, calling for assistance, and reaching a DIS staff member should you call others. DIS will contact your family if necessary.

### **Third Priority: Assist the injured and/or attempt to eliminate further hazard**

If you can be of aid to injured people do so only after making sure that contact has been made with local emergency officials.

If you are able to take steps to eliminate a hazard from spreading or be of aid to local security or law enforcement without putting your own safety at risk you should do so if it can prevent further injury or loss of life.

You should NOT put yourself at any risk to save material assets.

### **Fourth Priority: Account for all your fellow students**

Make sure all your fellow students are accounted for. Assist tour leaders or assign someone to search areas or make calls.

### **Fifth Priority: Inform your family about your current situation**

Make sure your family or a contact back home is aware of the current situation and your condition.

## INSURANCE MATTERS WHILE TRAVELLING ON DIS STUDY TOURS

Students enrolled at DIS have comprehensive health -, accident -, property - and personal liability insurance coverage. For further information and details, please refer to the insurance conditions at [disabroad.org/insurance](http://disabroad.org/insurance).

For insurance claim forms and advice, please see the Housing and Student Services office. They are located in Vestergade 8.

### THEFT

Please remember to always keep your personal belongings in a safe place – never leave them unattended or in unlocked premises. Should you, despite having taken these measures, have your personal belongings stolen during your study tour, please make sure to follow the guidelines below in order to be able to make an insurance claim upon your return to DIS.

1. **ALWAYS** file a police report with the local police. Please consult with your study tour leader. Without a police report, the insurance company cannot accept your claim.
2. If either your credit card or cell phone is stolen, don't forget to cancel them to avoid abuse.
3. **ALWAYS** keep a copy of your passport and the Danish residence permit on you. Should your passport get stolen, please consult with your study tour leader who will be able to direct you to the embassy or consulate to get you an emergency passport issued.

### MEDICAL EMERGENCIES

Please remember to **ALWAYS** keep your Danish National Health Card (the CPR card) on you. If you need to see a doctor or the emergency room, please consult with your study tour leader who will assist you to the nearest one. Present the doctor/hospital with your CPR card as your personal ID. In some countries, you might still be asked to pay upfront, however please remember to bring all medical receipts, prescriptions and doctor's statements back to DIS. This paperwork will be necessary to get your expenses covered through the insurance.

# DENMARK

