

# The European Urban Experience: Why Cities Matter



**HAMBURG**

**Core Course Week**  
DIS Copenhagen | Fall 2018
















Name: \_\_\_\_\_

**Core Course Week Objectives:**



- Provide you with real-life experiences of current debates in city planning, such as gentrification, waterfront redevelopment or bike friendly city
- Understand the role of history and governance in shaping a city
- Be able to reflect on the complex relationship between the various scales of the urban experience
- Engage in your personal learning process outside the classroom by actively participating and challenging your current ideas and assumptions
- Get to know your fellow students and instructor in an educational and social setting outside DIS

<b>Study Tour Leaders</b>		<p><b>Regitze Hess</b>  <i>DIS Faculty</i>  Tlf. +45 2680 4142</p> <p><b>Silvia Dragomir</b>  <i>DIS Lecturer</i>  Tlf. +45 5027 3126</p>
<p><b>DIS Office</b></p> <p><b>DIS Emergency</b></p> <p><b>Emergency Response</b></p> <p><b>U.S. Embassy</b></p>		<p>+45 3311 0144 (8.30-16.30)</p> <p>+45 3067 1000 (24hrs)</p> <p>112</p> <p><b>U.S. Consulate General in Hamburg</b>  Alsterufer 27/28  20354 Hamburg  Germany  Tel. +49 40 41171100</p>

MONDAY, SEPTEMBER 10			Hamburg
7.20		Meet the group at Copenhagen Central Station (København H) under the big clock/info desk in the middle of the station.  <b><i>Remember your lunch packs!</i></b>	
7.35		Depart for Hamburg	
12.16		Arrive in Hamburg at Hamburg Hauptbahnhof Station	
		Depart train station to hostel via S Train	
~12.40		Arrive and drop bags: <b>Superbude St. Georg</b> Spaldingstraße 152 20097 Hamburg Germany Tel. +49 40 3808780  Closest S-bahn: Berliner Tor	
13.00		Time on own for lunch around hostel	
14.30		Meet outside of hostel and depart for group visit via public transport	
15.15		<b>Elbphilharmonie</b> Platz der Deutschen Einheit 20457 Hamburg Germany  <i>Visit Elbphilharmonie's public viewing platform for a grand view of Hamburg and its harbourscape. Elbphilharmonie is Hamburg's grand new music venue &amp; cultural flagship on the river Elbe.</i>	
		Time on Own  <i>Explore HafenCity &amp; Hamburg city center on your own</i>	

18.45		Meet at restaurant
19.00		Group Dinner: <b>Schifferbörse</b> Kirchenallee 46 20099 Hamburg, Germany Tel. +49 40 245240
20:30		Return to hotel for official check in
		Rest of evening on own

## TUESDAY, SEPTEMBER 11

8:20		Breakfast at hostel
9:20		Meet in hostel lobby to depart for group tour
10.00-12.30		<p>Group Visit:  <b>Hamburg Sustainability and Harbour Development Tour</b>            IBA Dock Tour            Meeting location:            Am Zollhafen 12,            20539 Hamburg, Germany</p> <p><i>Meet at IBA-Dock and end close to S-Bahn station Wilhelmsburg. Don't forget your public transport tickets.</i></p> <p><i>Tour Hamburg's international building exhibition [IBA] focusing on the sustainable development of areas of the city south of the Elbe. Intro at IBA Dock and bus &amp; walking tour of Wilhelmsburg</i></p>
12:30 – 14:15		<p>Lunch on own  <i>Your tour leaders will provide you with lunch money</i></p>
14:15		Meet at designated location to depart for group visit by public transport
15.00-17.00		<p>Guided Walk/Lecture:  <b>PlanBude</b>  <i>Lecture and brief walk led by Tina Roethig.</i></p> <p>Meeting location:  <b>Hein-Köllisch-Platz</b>            20359 Hamburg            Germany</p> <p><i>Tour St. Pauli neighbourhood subject to challenges of gentrification. Visit "Planbude", a bottom up initiative engaging with local community through participatory processes.</i></p>



Rest of evening, including dinner, on own

*You are responsible for finding your own way back to the hostel*

## WEDNESDAY, SEPTEMBER 12

8:15		Breakfast at hostel
9.15		Meet in lobby <i>Return room keys, check out of hostel, and store luggage for the day.</i>
		Depart for group visit by public transport
10.00- 12.00		Group Visit: <b>HafenCity Tour</b> Am Sandtorkai 30 20457 Hamburg Tel: +49 40 369017 99  Nearest U-Bahn: U1 Meißberg  <i>Tour of Hamburg's HafenCity development with Mr. Thorsten Gödtel B.Sc. starting with the large-scale model of HafenCity, followed by walking tour through western and central parts of HafenCity. Tour concluding at the second Information Center, the Sustainability Pavilion.</i>
		Depart on foot for group lunch
12:15 – 13:45		Group lunch: <b>Rudolph's</b> Poggenmühle 5 20457 Hamburg Tel: +49 40 182 977 89
13.45 – 16.00		Explore HafenCity & Hamburg city center on your own
16.00		Meet at hostel to pick up luggage
16.15		Depart for central station by public transport  <i>Get dinner on own at the train station</i>
17.28		Depart Hamburg from Hamburg Hauptbahnhof

22.26	★	Arrive at Copenhagen Central Station
-------	---	--------------------------------------

## THURSDAY, SEPTEMBER 13

10.00 –  
15.00



### North to Nordhavn

Exploring Copenhagen's northern harbour expansion

*Bring your own snacks & lunch!*

### 10:00 am – Meet at Nørreport Stations

Walk'n'talk around Nørreport Station

- Nørreport Station
- Iræls Plads
- Torvehallerne

### S-train from Nørreport to Nordhavn

Walking tour of Nordhavn

- Nordhavn Exhibiton
- Silos transformed
- Parking garage X playground
- UN City

Return by S-train to city center

Tour conducted by Regitze

By mass transit – rejsekort

RMH pick up whisper sets

## FRIDAY, SEPTEMBER 14

10.00 –  
15.00



### Flagships and Fringe areas

Exploring Copenhagen's inner harbor and outer edges

*Pack your own snacks & lunch!*

### 10:00 am – Meet on the plaza in front of BLOX

Visit DAC at BLOX

Embark harbor bus 991 from "Det Kongelige Bibliotek"

- See Copenhagen's harbourscape from the water
- Debark
- Explore Holmen & Refshaleøen

Return with Bus 9A to city center

Tour conducted by Regitze

DAC admission fee

PAYMENT- RMH DIS MC

By mass transit – rejsekort

RMH return whisper sets

## END OF CORE COURSE WEEK

# URB A CCW : European Urban Experience: Why Cities Matter A

10-09-2018 - 12-09-2018

Total on tour: 22

Total students: 20

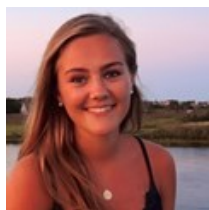
Total other: 2



Hess, Regitze Marianne



Dragomir, Silvia



Ballard, Paige Elizabeth  
USA  
Middlebury College



Booker, Clara Isabel  
USA  
Bowdoin College



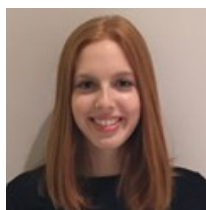
Bowen, Michaela Elizabeth  
USA  
Bates College



Davis, Emily Marie  
USA  
University of Puget Sound



Downing, Kalei Elizabeth  
USA  
Dickinson College



Eggert, Haley Jacqueline  
USA  
Binghamton University, State



Gottlieb, Julia  
USA  
Scripps College



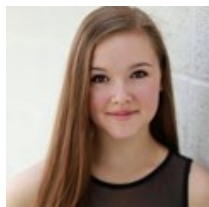
Harman, Helen Margaret  
USA  
Bryn Mawr College



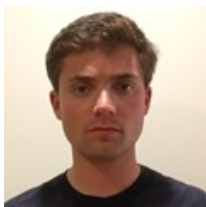
Hickman, Danielle Brianna  
USA  
Connecticut College



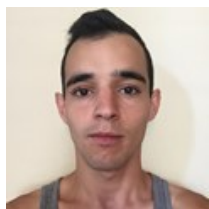
Higgerson, Serena Jermain Slocum  
USA  
College of William and Mary



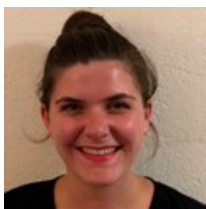
Jamieson, Kalie Michelle  
USA  
Muhlenberg College



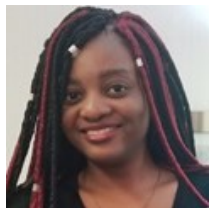
Leeman, Gabe Nathan  
USA  
Wesleyan University



Marvel, Colton Eugen  
USA  
Ball State University



Morgan, Monica Suzanne  
USA  
University of Rochester



Mouli, Leyla Raissa  
CM  
University of Rochester



Pagliocco, Sydney Ann  
USA  
Trinity College



Sandford, Olivia Rose  
USA  
Bates College



Sedoric, Annie Winslow  
USA  
Bates College



Siegfried, Maggie Kathleen  
USA  
University of Delaware



Tong, Lizzie Peng  
USA  
University of North Carolina at Chapel

## INSURANCE MATTERS WHILE TRAVELLING ON DIS STUDY TOURS

Students enrolled at DIS have comprehensive health -, accident -, property - and personal liability insurance coverage through a combination of the **Danish national health system** and **Europæiske ERV**, which is valid throughout the world.

For further information and details, including forms and information on how to file insurance claims, please refer to the insurance conditions at [www.disabroad.org/insurance](http://www.disabroad.org/insurance).

You can also email [insurance@dis.dk](mailto:insurance@dis.dk) to have any questions answered.

### THEFT

Keep your personal belongings in a safe place and **never leave them unattended or in unlocked premises**. ALWAYS keep a copy of your passport, Danish residence permit and CPR card in a location separate from your originals (e.g. in the bottom of your suitcase).

Should you have your personal belongings stolen during your study tour, please make sure to follow the guidelines below:

1. **ALWAYS** file a police report with the local police, and consult with your tour leader. Without a police report, the insurance company will reject your claim.
  - a. *"However, if, for an exceptional reason, the police cannot be notified at the location of the theft or robbery, e.g. on account of immediately imminent departure, the notification must be made as soon as possible following the Insured's return home, and the original receipt for the notification must be sent to Europæiske ERV."*
2. If your wallet (incl. transportation pass, purchase card, credit card, phone) is stolen, cancel them as soon as possible (you can reference the DISAbroad website for further advice).
3. If your passport is stolen, you will need to go to the closest embassy or consulate with the copy of your passport to have an emergency passport issued.

### MEDICAL EMERGENCIES

**ALWAYS** keep your Danish National Health Card (the CPR card) on you. If you need to see a doctor or go to the emergency room, consult with your study tour leader who will assist you. In a life-threatening emergency call 112, or the local emergency number, before your study tour leader.

Present the doctor/hospital with your CPR card as your personal ID. In some countries, you might be asked to pay up front, but remember to bring all medical receipts, prescriptions and doctor's statements back to DIS; this paperwork will be necessary to get your expenses covered through the insurance.

## DIS CODE OF STUDENT RESPONSIBILITY

Students and tour leaders are expected to uphold and follow the expectations of the DIS Code of Student Responsibility while on study tour. The full Code is available online in the “Student Resources” section for both Copenhagen and Stockholm. Students are reminded of the following Code sections, which are particularly relevant while on study tour:

- Students are expected to contribute to a positive community while on study tour.
- Obstruction of study tour activities *is prohibited*. Students are to comply with directions of DIS officials and partners acting in performance of their duties, including communication of guidelines, directives, timetables and instructions.
- Students are financially responsible for their own actions and any property damage, fines, etc. are the responsibility of the student to rectify.
- Students who choose to consume alcohol do so with the knowledge that they remain responsible for their actions at all times. Being under the influence of alcohol during or between study tour visits *is prohibited*. *Extreme or repeated intoxication at any time is prohibited*.
- Students may not purchase, possess, use, or distribute any drugs considered to be illicit, illegal, or a controlled substance in Denmark, Sweden, and any country they visit while enrolled with DIS (including study tour travel). Students may not use drugs legally prescribed to another person or inappropriately/illegally use otherwise legal drugs. Students are further cautioned that the possession of illegal drugs is often dealt with harshly by local law enforcement

*DIS tour leaders are obligated to report any violation of the Code of Student Responsibility including inappropriate behavior or negative participation to both the DIS Study Tours Department as well as the Office of Academic Support.*

*Inappropriate behavior on any DIS study tour can also result in dismissal from DIS without refund of tuition or study tour costs.*

# DIS STUDY TOUR EMERGENCY PROCEDURES

## **First Priority: Protection of Life and Wellbeing**

In case of an emergency your first priority is to ensure that you are in or evacuate to a safe area. Follow the directions of local authorities, where present, and note that often the safest decision is to remain where you are.

## **Second Priority: Call for Assistance**

If you, or anyone with you is injured or in direct risk of being injured, call **112** or the local emergency number.

**Then, call one of your tour leaders** (contact numbers are found on the front page of this booklet).

In the unlikely event that you cannot reach your tour leaders, call the 24/7 DIS Emergency Phone:

Copenhagen: +45 30 67 10 00

Stockholm: +46 72 14 12 862

*After reaching safety, calling for assistance, and reaching a DIS staff member, stay off the phone to conserve your battery and so that your line is open if someone needs to reach you.*

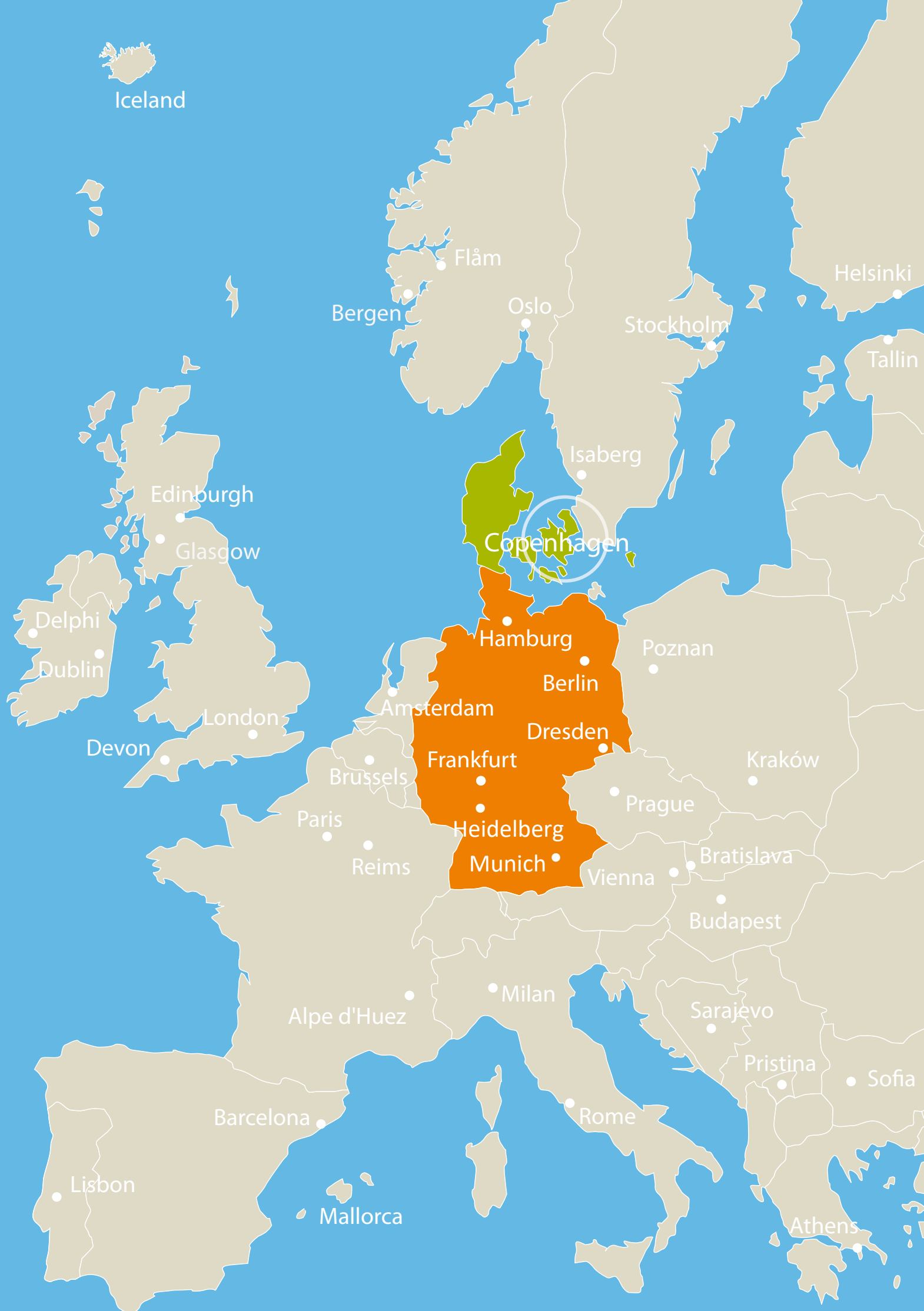
## **Third Priority: Assist the injured and/or attempt to eliminate further hazard**

If you are able to take steps to eliminate a hazard from spreading or be of aid to injured people **without putting your own safety at risk**, you should do so if it can prevent further injury or loss of life.

## **Fourth Priority: Inform your family/personal emergency contact**

Only after the immediate risk is mitigated, inform your family/emergency contact person of your status and situation.

DIS will assist you in communicating with your home institution, and any other necessary parties.



Iceland

Flåm

Bergen

Oslo

Stockholm

Helsinki

Tallin

Edinburgh

Glasgow

Delphi

Dublin

London

Devon

Isaberg

Copenhagen

Hamburg

Berlin

Amsterdam

Dresden

Frankfurt

Brussels

Paris

Reims

Heidelberg

Munich

Poznan

Kraków

Prague

Bratislava

Budapest

Vienna

Alpe d'Huez

Milan

Sarajevo

Pristina

Sofia

Barcelona

Rome

Lisbon

Mallorca

Athens